

RECEIVED
LARAMIE COUNTY
CHEYENNE, WY.

CERTIFIED LAND CORNER RECORDATION '88 AUG 19 AM 10 12

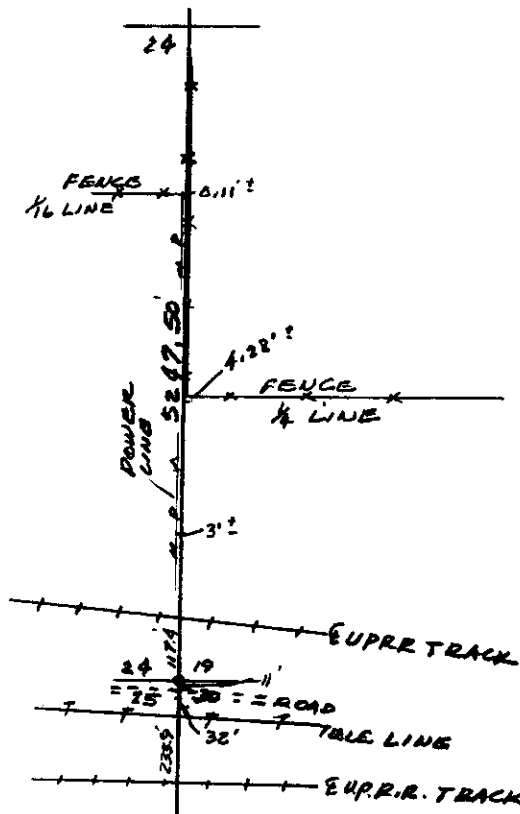
DESCRIPTION OF CORNER EVIDENCE FOUND, AND ORIGINAL RECORD (if known)

SOUTHEAST CORNER SECTION 24, T. 13N., R. 67W.
FOUND 3/4" PIPE (BENT) WOODEN HUB ON EAST SIDE

DESCRIPTION OF MONUMENT AND ACCESSORIES ESTABLISHED
TO PERPETUATE THE ORIGINAL LOCATION OF THIS CORNER:

SET 5/8" REBAR WITH SURVEY CAP
IN PLACE OF BENT PIPE

SKETCH, WITH COURSE AND DISTANCE TO ADJACENT CORNER IF DETERMINED IN THIS SURVEY.
(May Sketch or Paste Reproduction on Reverse Side.)



I, DONALD M. HOPKINS certify that I have carefully performed or reviewed the work done on the diagrammed corner as reported on this recordation form and approve the same.

Donald M. Hopkins
Signature of Surveyor

558
Registration No.

STATE OF WYOMING,
Office of Clerk and Recorder,
County of Laramie

This "corner record" was filed for record on the 19th day of AUGUST, 1988, was noted on the cross-index plat and is assigned page No. 139, in book No. 1264.

Janet C. Whitehead
County Official

Cross Index No. <u>1-R</u>	T. <u>13N.</u>	R. <u>67W.</u>	Mer.
<u>25-R</u>	<u>13N.</u>	<u>67W.</u>	Mer.
_____	T. _____	R. _____	Mer.
_____	T. _____	R. _____	Mer.
_____	T. _____	R. _____	Mer.
_____	T. _____	R. _____	Mer.
_____	T. _____	R. _____	Mer.